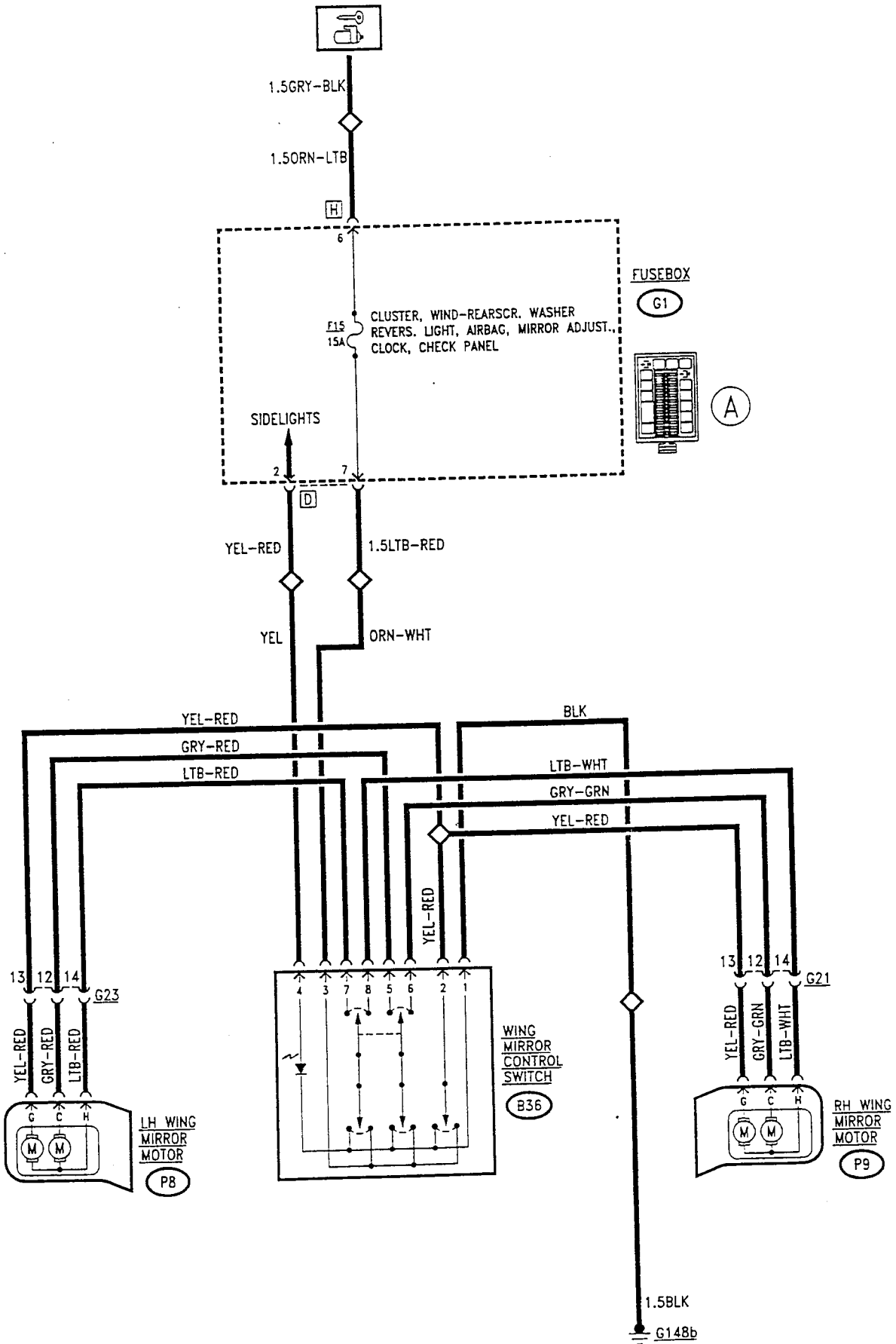


## WING MIRROR ADJUSTMENT

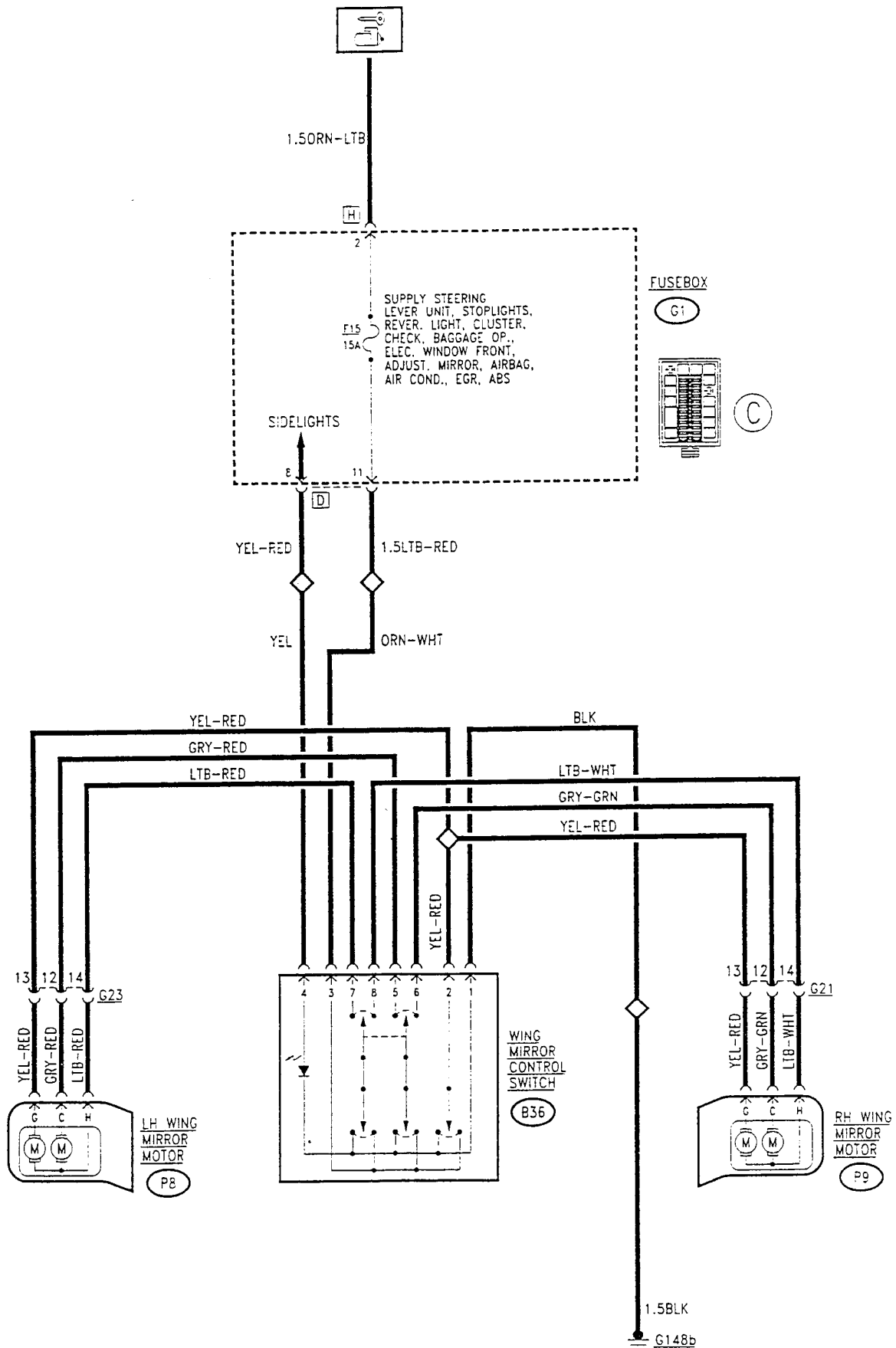
### INDEX

WIRING DIAGRAM . . . . .	25-2
GENERAL DESCRIPTION . . . . .	25-3
FUNCTIONAL DESCRIPTION . . . . .	25-3
COMPONENTS AND CONNECTORS . . . . .	25-3
LOCATION OF COMPONENTS . . . . .	25-5
FAULTFINDING TABLE . . . . .	25-6
CHECKING COMPONENTS . . . . .	25-6

WIRING DIAGRAM



## WIRING DIAGRAM





**GENERAL DESCRIPTION**

The two wing mirrors are adjusted through the special switch which controls the two electric motors located inside each mirror (one motor turns the mirror on horizontally, the other vertically).

A single switch operates both the left and right mirrors, as a selector makes it possible to switch from one to the other.

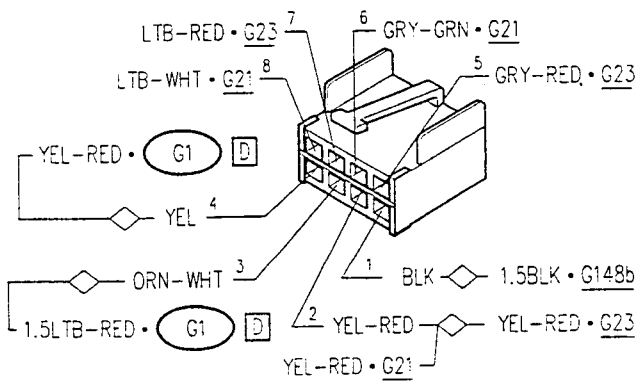
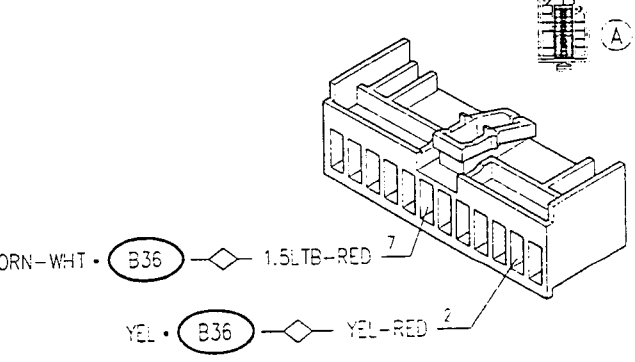
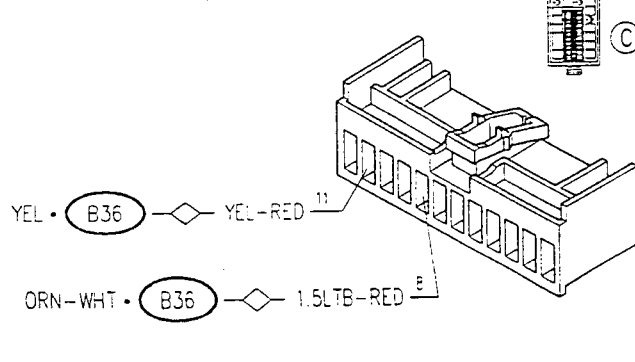
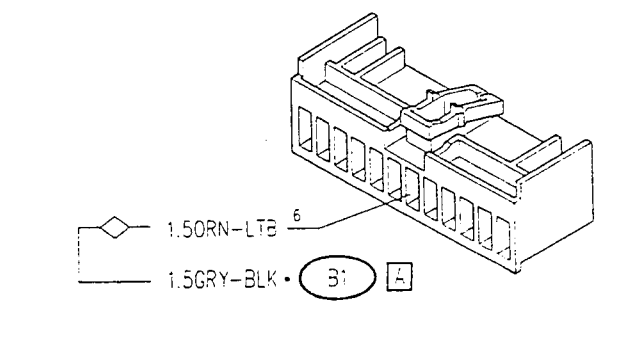
**FUNCTIONAL DESCRIPTION**

The double switch **B36** controls the two electric motors located in the mirrors **P8** (left) and **P9** (right).

The switch is "turn-key" supplied - pin 3 - through fuse **F15** of fusebox **G1**; pin 1 is earthed.

By actuating the switch **B36** in one of the possible directions, positive and earth signals are sent to one of the two motors, in addition to the shared signal - pin 2 -, thereby determining the direction of rotation. Depending on the position of the selector, the right motors **P9** (signals leaving pins 6 and 8 of **B36**) or the left ones **P8** (signals from pins 5 and 7 of **B36**) are connected; the switch is illuminated by a led, which is turned on when the side lights are on - pin 4 - (also see "Lighting and indicators").

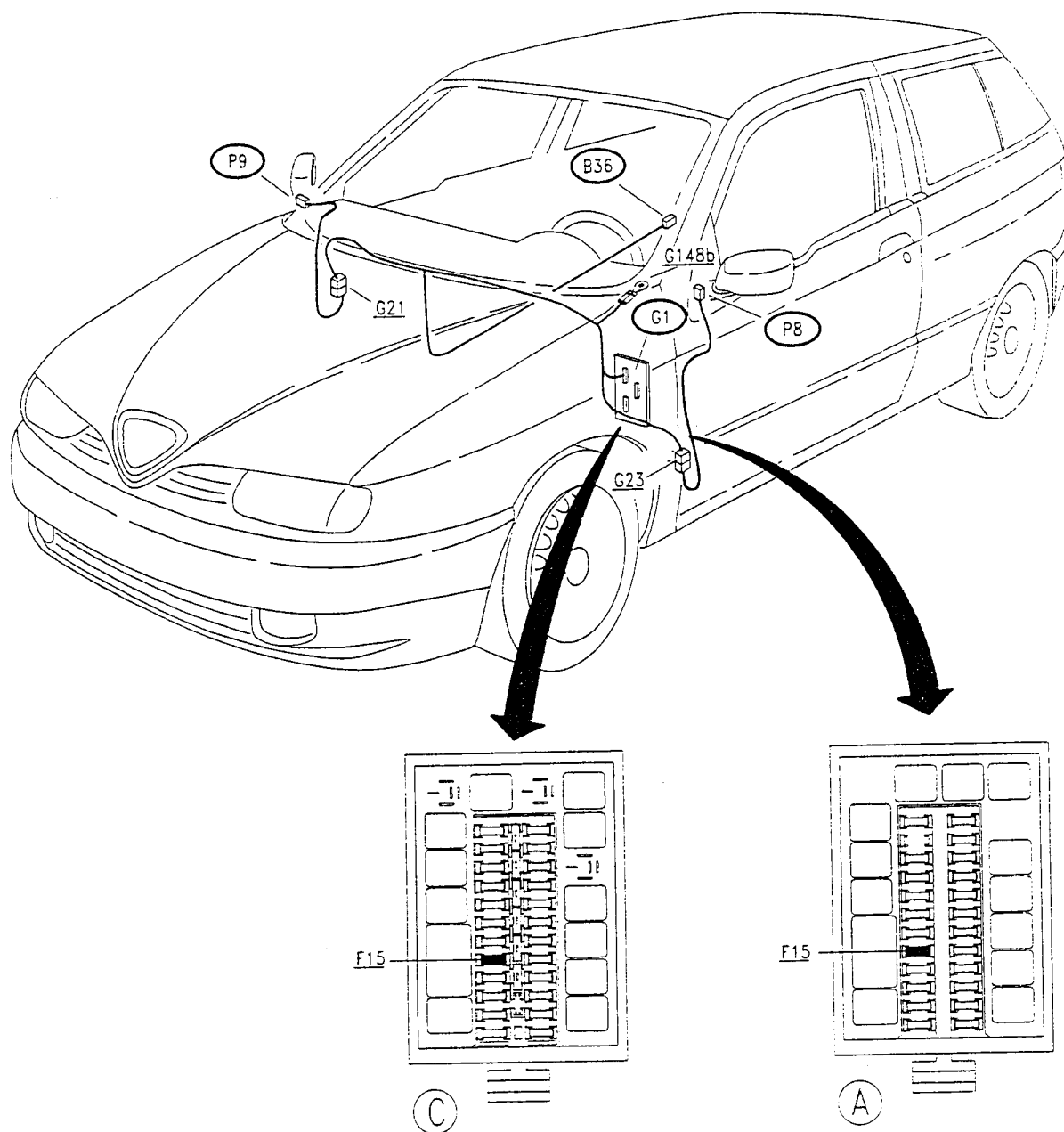
**COMPONENTS AND CONNECTORS**

Wing mirrors control switch	<b>B36</b>	Fusebox	<b>G1</b> <b>D</b>
			
Fusebox	<b>G1</b> <b>D</b>	Fusebox	<b>G1</b> <b>H</b>
			

### COMPONENTS AND CONNECTORS (cont.d)

RH front door wiring connector		G21
LH front door wiring connector		G23
Earth under LH dashboard	G148b	LH wing mirror motors
RH wing mirror motors		P9

## LOCATION OF COMPONENTS

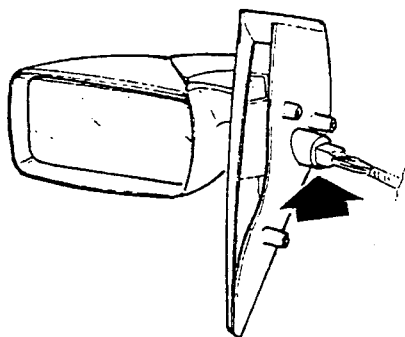


## FAULTFINDING TABLE

Failure	Component to be checked			
	F15	P8	P9	B36
Wing mirror adjustment, under all circumstances	•			•
LH mirror adjustment		•		•
RH mirror adjustment			•	•
Switch illumination (with side lights on)				•

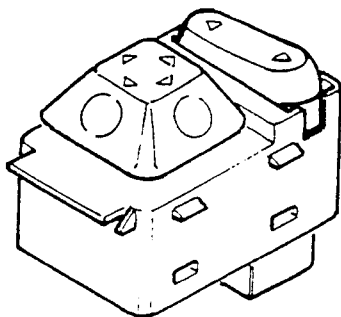
## CHECKING COMPONENTS

RH/LH wing mirror motors (P8) (P9)



SPECIFICATIONS	
rotation upwards	12V at pin C, earth at pin G
rotation downwards	12V at pin G, earth at pin C
rotation rightwards	12V at pin G, earth at pin H
rotation leftwards	12V at pin H, earth at pin G

Double wing mirrors control switch (B36)



Checking the device: see test A



<b>CHECKING DOUBLE WING MIRROR CONTROL SWITCH (B36)</b>	<b>TEST A</b>
---	---------------

TEST PROCEDURE		RESULT	CORRECTIVE ACTION
A1	CHECK VOLTAGE	OK ►	Carry out <b>step A2</b>
	– With the key engaged, check for 12V between pins 1 and 3 of B36	<del>OK</del> ►	Check fuse F15 (15A). Restore the wiring between B36 and fusebox G1 and earth G148b.
A2	CHECK VOLTAGE	OK ►	Carry out <b>step A3</b>
	– With the side lights on, check for 12V at pin 4 of B36	<del>OK</del> ►	Check that the side lights are working properly; also check the wiring between B36 and G1
A3	CHECK VOLTAGE	OK ►	THE SWITCH IS WORKING CORRECTLY. Check the connection with the other components
	– Set the selector to the position for operating the <b>left</b> mirror and check: - 12V between pins G and H of mirror P9 moving the switch rightward and leftward - 12V between pins G and C of mirror P9 moving the switch upwards and downwards In the same way, moving the <b>right</b> mirror check: - 12V between pins G and H of mirror P8 moving the switch leftward and rightward - 12V between pins G and C of mirror P8 moving the switch upward and downward	<del>OK</del> ►	Carry out <b>step A4</b>
A4	CHECK VOLTAGE	OK ►	Restore the wiring between B36 and P9 (RH) or P8 (LH), or change one of the two motors
	– Set the selector to the position for operating the <b>left</b> mirror and check on B36 for: - 12V between pins 7 and 2 moving the switch leftward and rightward - 12V between pins 5 and 2 moving the switch upward and downward In the same way, operating the <b>right</b> mirror check for: - 12V between pins 8 and 2 moving the switch leftward and rightward - 12V between pins 6 and 2 moving the switch upward and downward	<del>OK</del> ►	Change switch B36

